



THE HEIGHT SAFETY SPECIALIST

HORIZONTAL LIFELINE

The AKROBAT lifeline is designed to be permanently installed on buildings and other structures where maintenance workers are exposed to a risk of falling when performing their work.

WHY USE AKROBAT'S LIFELINE?

- ✓ CORROSION RESISTANT
- ✓ 100% TIE-OFF
- ✓ MAX. 4 USERS
- ✓ VERSATILE
- ✓ AESTHETIC
- ✓ NON-DEFORMABLE



TECHNICAL SPECIFICATIONS

Material: Stainless Steel 316
 Cable Diameter: 8mm
 Lifeline Capacity: 12kN
 Comply with EN 795 : 2012 + TS16415 : 2013 Type C



MAKE SAFETY YOUR PRIORITY



Lifeline at Standing Seam Roof



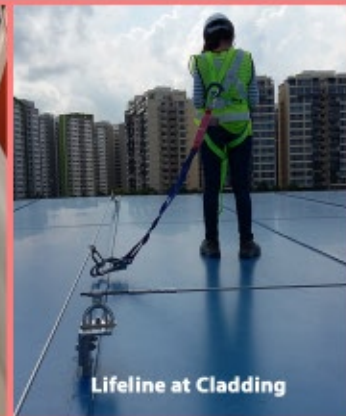
Lifeline on Concrete



Lifeline on Clamped Spider



Lifeline on Riveted Plate



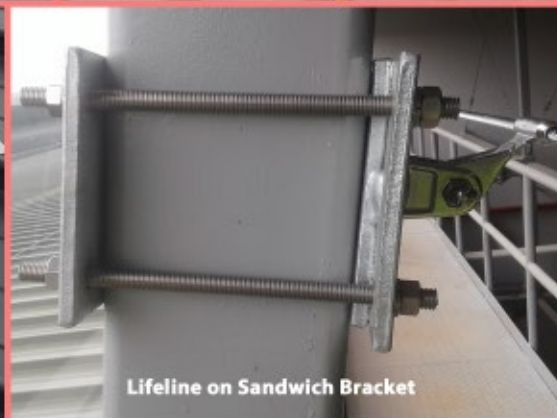
Lifeline at Cladding



Lifeline on Post



Lifeline at Round Seamed Roof



Lifeline on Sandwich Bracket



Lifeline on Strapping

AKROBAT LIFELINE COMPONENTS



1. Line Tensioner
2. End Bracket
3. Horizontal Glider
4. 8mm Wire Rope
5. Intermediary Bracket
6. Inline Tensioner
7. Energy Absorber
8. Crimping Ring



Horizontal Glider passes smoothly over the Intermediary brackets without unhooking.

Intermediary Brackets are arranged along the lifeline at intervals between 2 and 12 m.



Energy absorption by collapsing



End Bracket is equipped with an energy absorber which reduces the force transmitted to the host structure in case of a fall.



AKROBAT PTE LTD

53 Ubi Avenue 1 #05-13 Paya Ubi Industrial Park Singapore 408934

Tel: +(65) 6744 4235 | Fax: +(65) 6333 8836 | Email: salesup@akrobat.com.sg

www.akrobat.com.sg

www.facebook.com/akrobat